

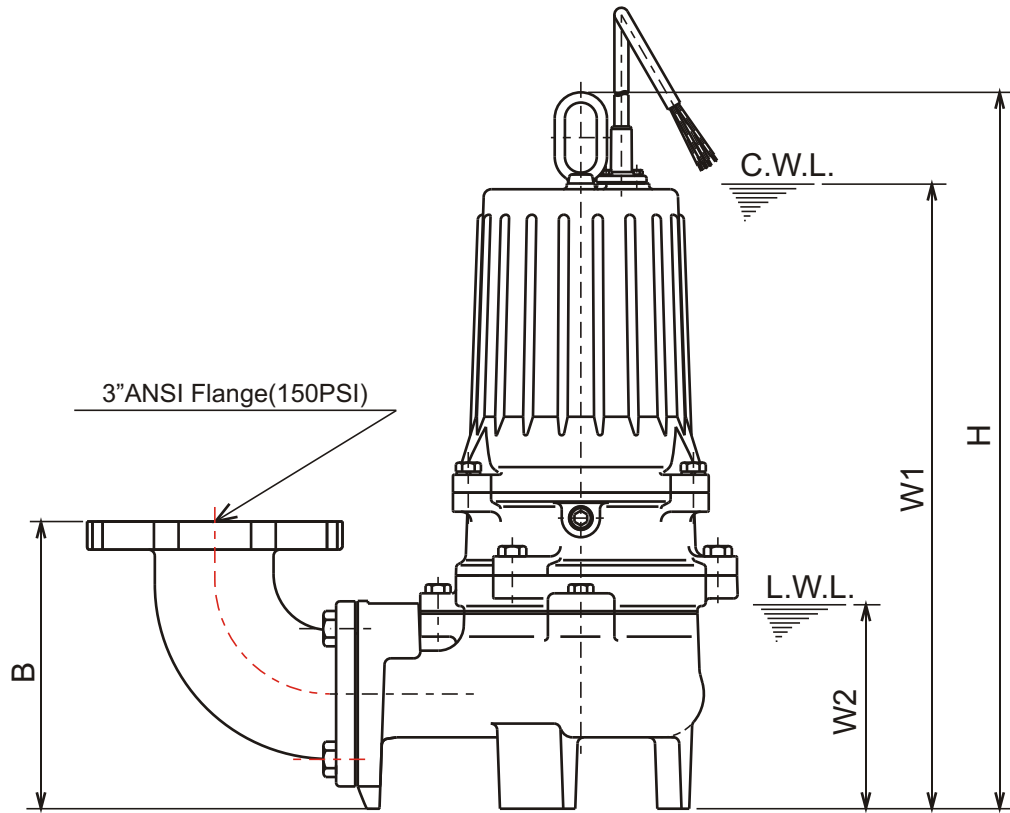
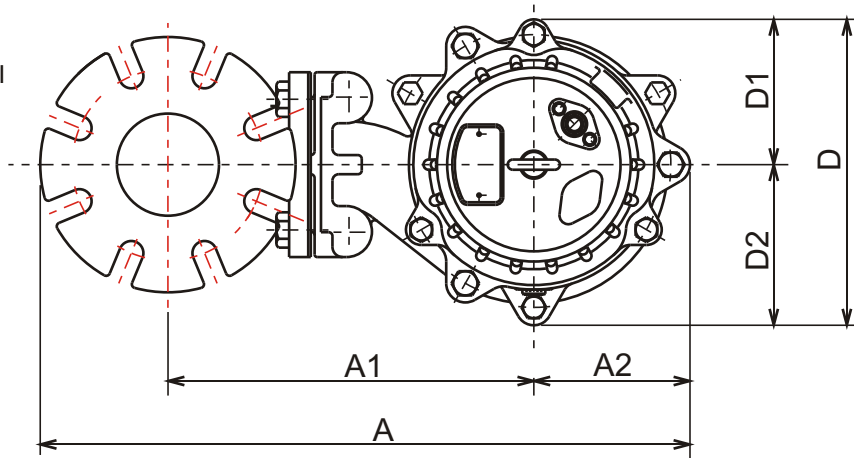


U - SERIES
SEMI - VORTEX - SEWAGE & WASTEWATER PUMPS

DIMENSIONS

Bend model:
BEND80-80 ANSI

80U22.2-62



C.W.L. : Continuous running Water Level
L.W.L. : Lowest running Water Level

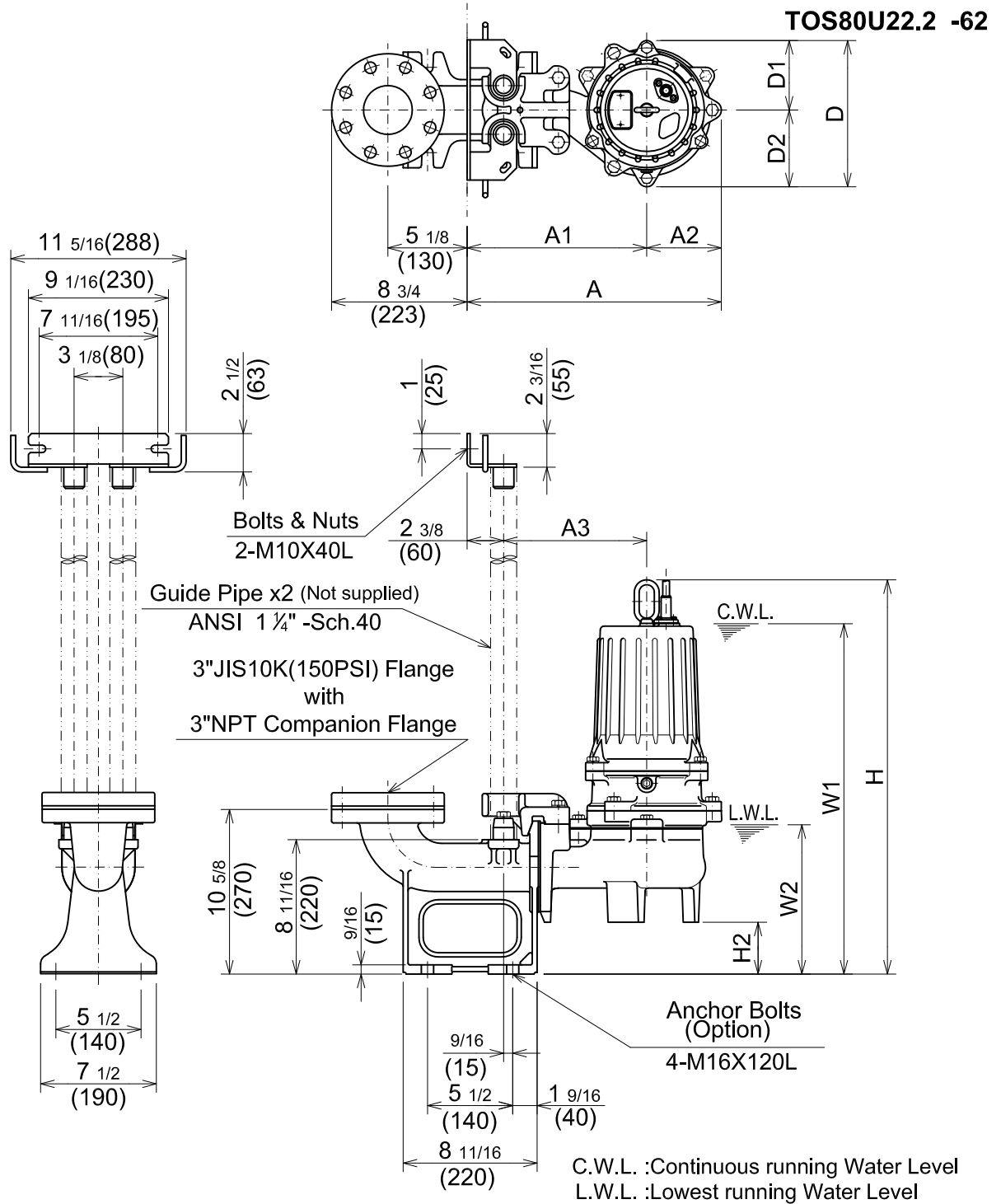
DIMENSIONS:USCS (Inch)

Model	HP	NOM. SIZE	Pump & Motor								C.W.L. W1	L.W.L. W2	*Wt. (lbs.)
			A	A1	A2	B	D	D1	D2	H			
80U22.2-62	3	3"	20 1/2	11 11/16	4 13/16	8 7/8	9 7/16	4 1/2	4 15/16	22 1/8	19 1/4	6 1/4	117

DIMENSIONS:METRIC (m m)

Model	kW	NOM. SIZE	Pump & Motor								C.W.L. W1	L.W.L. W2	*Wt. (kg)
			A	A1	A2	B	D	D1	D2	H			
80U22.2-62	2.2	80	520	297	123	225	240	114	126	562	490	160	53

*Excluding Cable.



DIMENSIONS:USCS(Inch)

Model	HP	NOM. SIZE	Pump & Motor									C.W.L.	L.W.L.	Wt. (lbs.)
			A	A1	A2	A3	D	D1	D2	H	H2			
TOS80U22.2 -62	3	3"	16 7/16	11 5/8	4 13/16	9 1/4	9 7/16	4 1/2	4 15/16	25 1/2	3 3/8	22 5/8	9 5/8	112

DIMENSIONS:METRIC(mm)

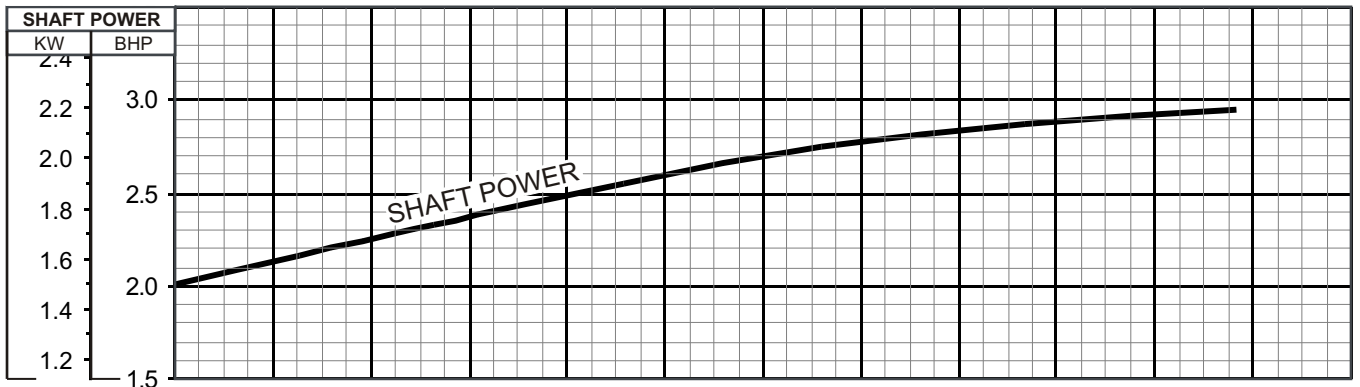
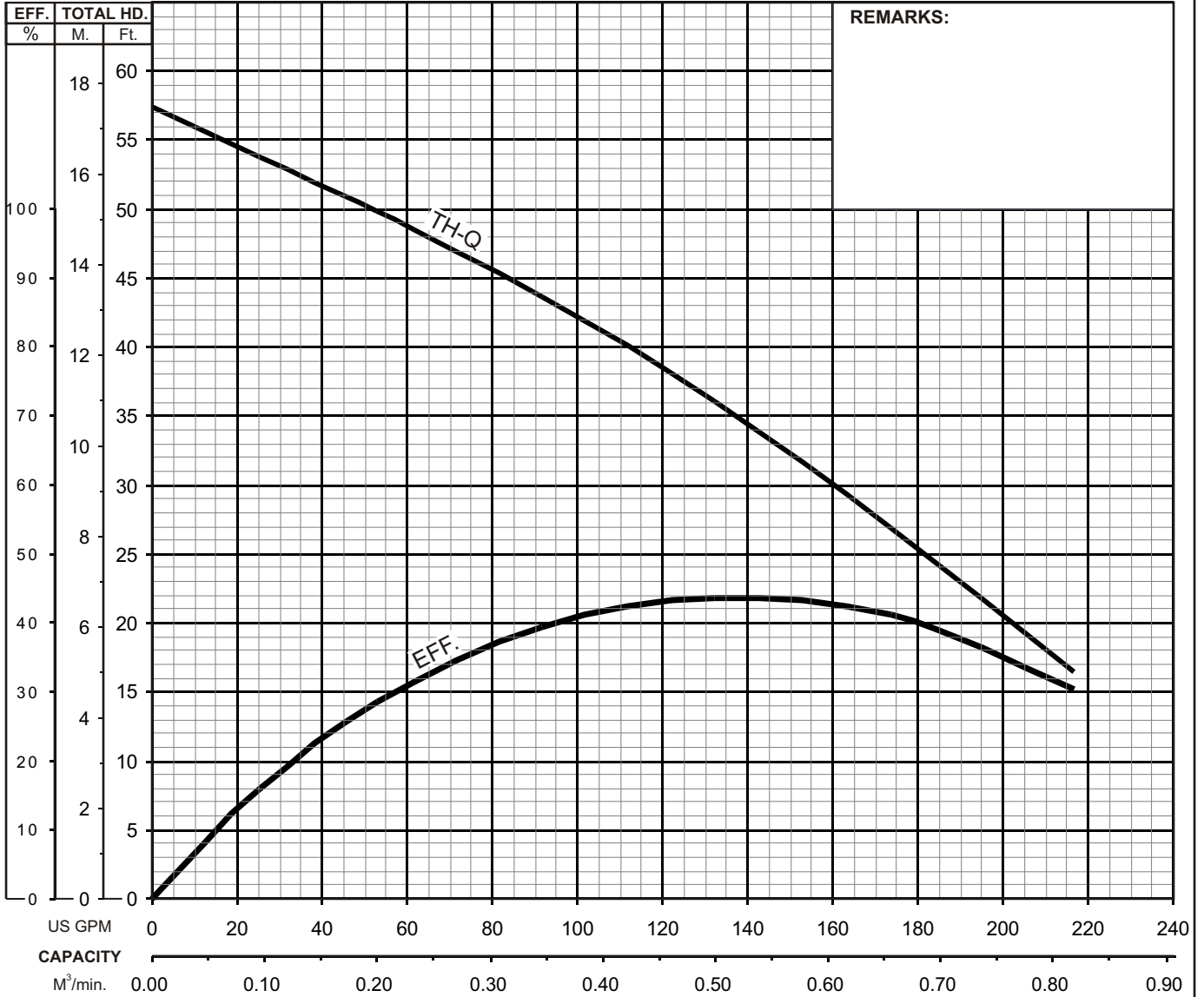
Model	kW	NOM. SIZE	Pump & Motor									C.W.L.	L.W.L.	Wt. (kg)
			A	A1	A2	A3	D	D1	D2	H	H2			
TOS80U22.2 -62	2.2	80	418	295	123	235	240	114	126	647	85	575	245	51



U - SERIES SEMI - VORTEX - SEWAGE & WASTEWATER PUMPS

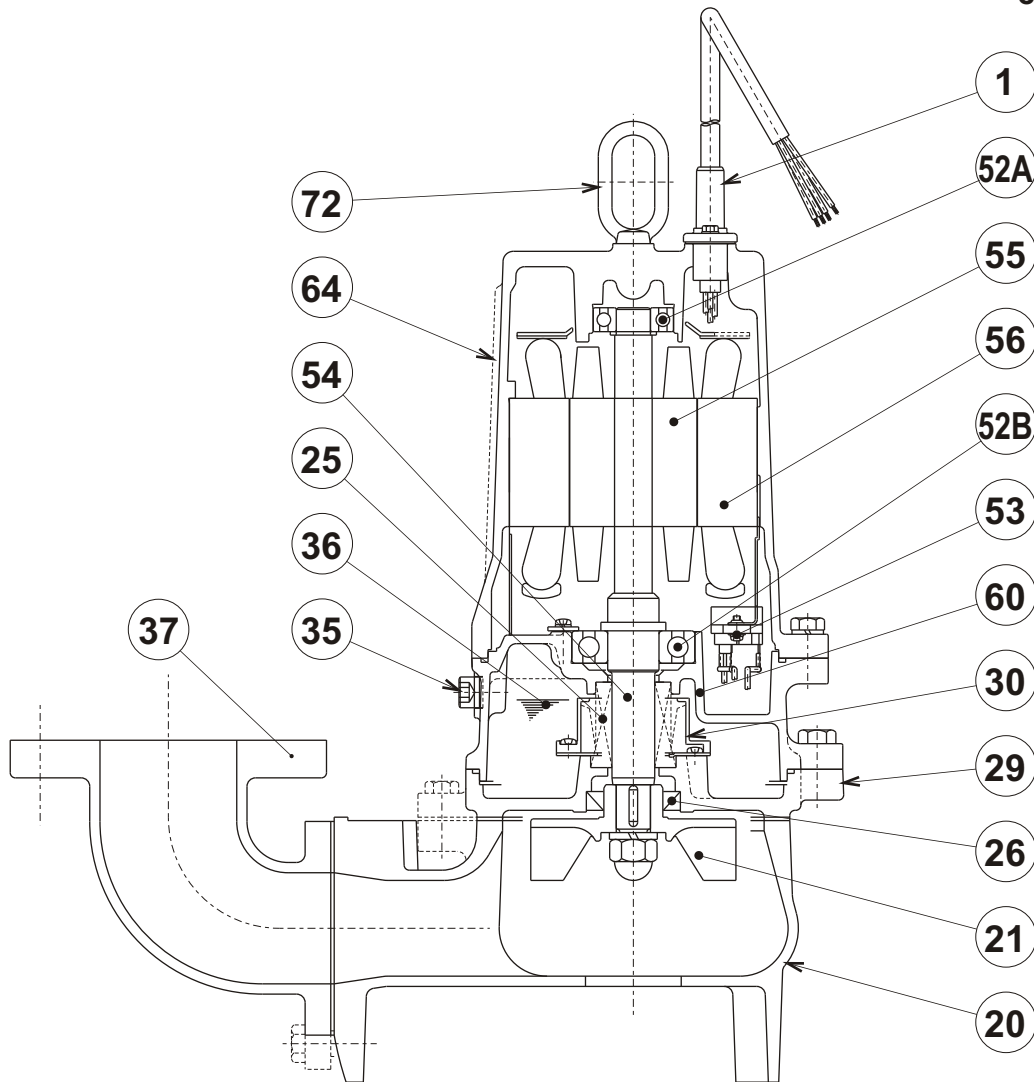
PERFORMANCE CURVE

MODEL	BORE	HP	KW	RPM	SOLIDS DIA	LIQUID	SG.	VISCOSITY	TEMP.
(TOS)80U22.2 -62	3"/80mm	3	2.2	3410	2.2"/ 56mm	Water	1.0	1.123 CST	60°F
PUMP TYPE	PHASE	VOLTAGE	AMPERAGE	HZ	STARTING METHOD	INS. CLASS			
Semi-Vortex-Sewage&Wastewater	3	208-230/440/575	9.4-8.8 / 4.4 / 3.5	60	Direct On Line	F			
CURVE No.	DATE	PHASE	VOLTAGE	AMPERAGE	HZ	STARTING METHOD	INS. CLASS		
-	-	-	-	-	-	-	-		



**TSURUMI PUMP**

U - SERIES
SEMI - VORTEX - SEWAGE & WASTEWATER PUMPS

SECTIONAL VIEW**80U22.2-62**

PART#	DESCRIPTION	MAIN MATERIAL / NOTE	ASTM, AISI CODE	RELATED DIN CODE	QTY
1	Power Cable	PVC Sheath AWG14/4- 32ft			1
20	Pump Casing	Cast Iron	A48M Class30B	EN 1561 GJL-200	1
21	Impeller	Cast Iron	A48M Class30B	EN 1561 GJL-200	1
25	Mechanical Seal	Silicon Carbide / H-25			1
26	Oil Seal	NBR/TC355511			1
29	Oil Casing	Cast Iron	A48M Class30B	EN 1561 GJL-200	1
30	Oil Lifter	PBT Plastic W/(GF+MD)40			1
35	Oil Plug	Stainless Steel	S 30400	1.4301	1
36	Lubricant	Turbine Oil ISO VG32 or SAE 10W-20			
37	Discharge Bend	Cast Iron / 3"ANSI Flange(150PSI)	A48M Class30B	EN 1561 GJL-200	
52A	Upper Bearing	#6204ZZC3			1
52B	Lower Bearing	#6306ZZC3			1
53	Motor Protector				1
54	Shaft	Stainless Steel	S 42000	1.4028	1
55	Rotor				1
56	Stator				1
60	Bearing Housing	Cast Iron	A48M Class25B	EN 1561 GJL-150	1
64	Motor Housing	Cast Iron	A48M Class25B	EN 1561 GJL-150	1
72	Lifting Lug Bolt	Stainless Steel	S 30400	1.4301	1

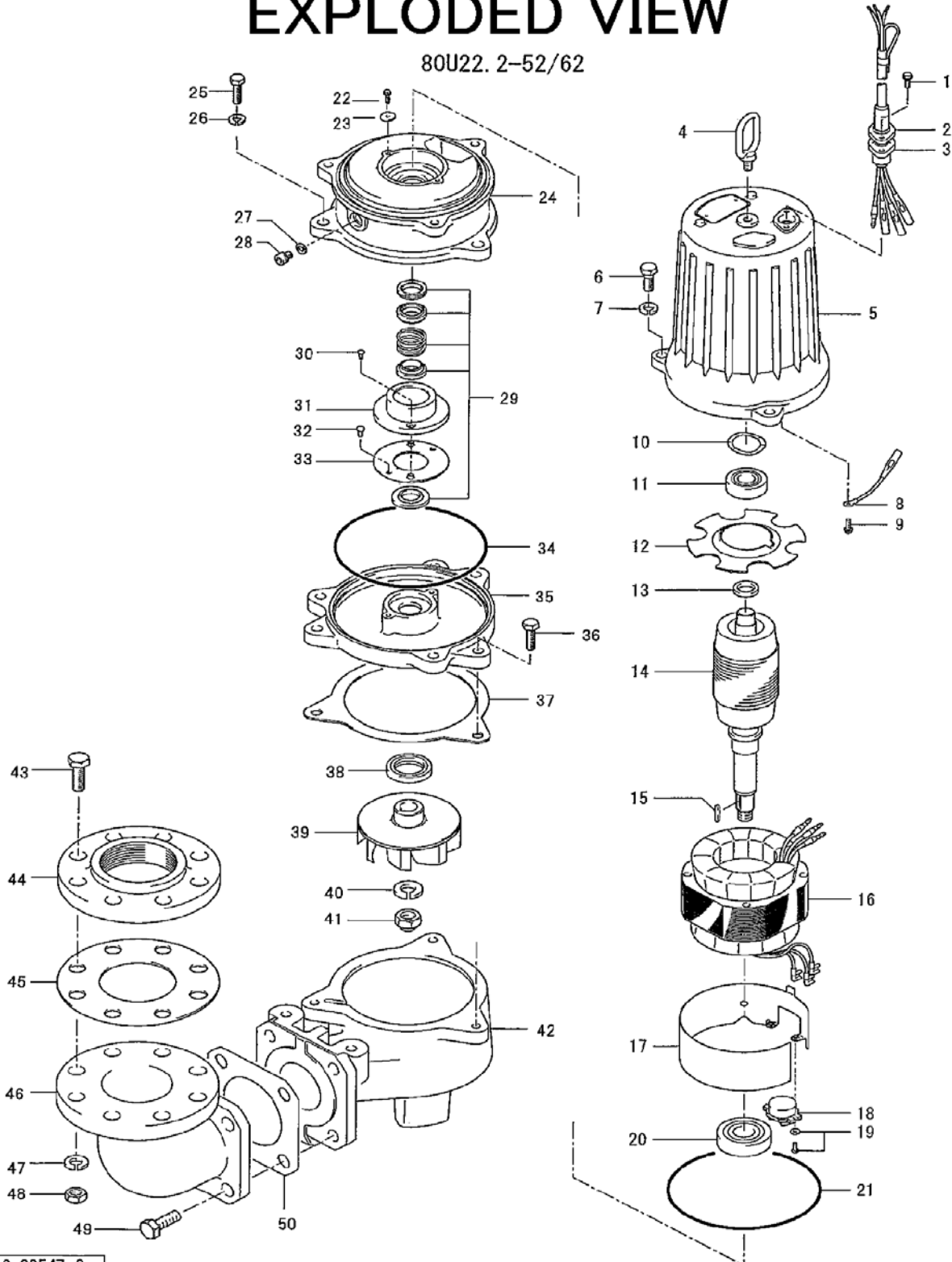
PARTS LIST		SEWER & WASTEWATER PUMPS			3/10/2017	
ITEM	PART No.	DESCRIPTION	QTY	SIZE	MATERIAL	NOTES
1	140-427-17	Hex.Bolt (w/Plain Washer)	2	M5x15	SUS304	
2	003-190-10	Gland	1		SUS316	
3	001-926-17	Cabtyre Cable Set (32') 60Hz(USA)	1	VCT4Cx2mm2	LBT	
4	072-000-03	Eye Bolt	1	M10	SUS304	
5	064-000-08	Motor Frame	1		FC	
6	140-076-17	Hex.Bolt	3	M10x30	SUS304	
7	142-164-19	Spring Washer	3	M10	SUS304	
8	009-211-16	Earth Terminal	1Set	1.25mm2x120L		
9	143-085-34	Pan Screw (w/Spring Washer)	1	M4x6	C3604	
10	142-389-12	Wave Washer	1	6204	SK5	
11	052-187-16	Bearing (w/O-ring)	1	AC-6204ZZC3		
12	058-000-13	Lead Wire Protection Plate	1	d61xd132x2t	Bakelite	
13	061-174-18	Slinger	1	d20xd27x2t	SPC	
14	055-000-02	Rotor	1Set			
15	147-128-16	Impeller Key	1	5x5x18.5l	SUS403	
16	056-001-18	Stator 220V-60Hz(USA)	1Set			
	056-001-19	Stator 440V-60Hz(USA)	1Set			
17	127-000-26	Protector Fixing Plate	1	KA313,d145	SPCC	
18	053-518-13	Motor Protector 220V-60Hz(USA)	1	KA313-GDXL103	(T.C)	
	053-477-19	Motor Protector 440V-60Hz(USA)	1	KA313-GQXL104	(T.C)	
19	143-126-12	Pan Screw (w/Spring Washer/Plain Washer)	2	M4x12	SWRM	
20	052-109-14	Bearing	1	6306ZZC3		
21	122-283-13	O-Ring	1	165xd3.1	NBR	*
22	140-000-23	Hex.Bolt (w/Spring Washer)	2	M5x10	SWRM	
23	062-187-17	Bearing Fixing Washer	2	d5.5xd18x2.3t	SPC	
24	060-000-13	Bearing Housing	1		FC	
25	140-098-15	Hex.Bolt	3	M12x35	SUS304	
26	142-165-10	Spring Washer	3	M12	SUS304	
27	121-247-12	Packing	1	d12.3xd18x2t	PE	*
28	035-113-18	Oil Plug	1	M12x14	SUS304	
29	025-193-11	Mechanical Seal	1	H-25	SIC	
30	143-070-23	Pan Screw	2	M5x6	SWRM	
31	030-143-12	Oil Lifter	1	H-25(A)(T)	Resin	
32	143-070-10	Pan Screw	2	M5x6	SWRM	
33	030-152-14	Seal Stopper	1	H-25(A)(T)	SPCC	
34	122-246-14	O-Ring	1	180xd3.1	NBR	*
35	029-266-18	Oil Casing	1	U-80-22/37	FC	
36	140-078-19	Hex.Bolt	3	M10x35	SUS304	

PARTS LIST		SEWER & WASTEWATER PUMPS			3/10/2017	
ITEM	PART No.	DESCRIPTION	QTY	SIZE	MATERIAL	NOTES
37	121-408-13	Packing	1	d153xd183x2t	NBR	*
38	026-109-13	Oil Seal	1	TC-355511	NBR	
39	021D9715	Impeller (60Hz)	1	80U22.2-62	FC	
40	142-166-11	Spring Washer	1	M16	SUS304	
41	141-033-15	Hex.Cap Nut	1	M16	SUS304	
42	020-793-12	Pump Casing	1	U-80-22	FC	
43	140-130-36	Hex.Bolt	8	M16x70	SWRM	included in BEND80x80 kit (specify ANSI or NPT)
44	048-000-54	Screwed Flange	1	NPT-3(JIS10K)	FC	included in BEND80x80 kit (specify ANSI or NPT)
45	121-105-33	Packing	1	JIS10Kx80mm	NR	included in BEND80x80 kit (specify ANSI or NPT)
46	037-169-15	Discharge Bend	1	80x80mm	FC	included in BEND80x80 kit (specify ANSI or NPT)
47	142-166-37	Spring Washer	8	M16	SWRH	included in BEND80x80 kit (specify ANSI or NPT)
48	141-008-11	Hex.Nut	8	M16	SUS304	included in BEND80x80 kit (specify ANSI or NPT)
49	140-124-11	Hex.Bolt	4	M16x40	SUS304	included in BEND80x80 kit (specify ANSI or NPT)
50	121-152-19	Packing	1	145mm2(P.C.145)	NBR	* included in BEND80x80 kit (specify ANSI or NPT)
	173-000-62	Packing O-Ring Set	1Set	(Marked by *)		
21	122-283-13	O-Ring (M.Frame/Brg.Housing)	1	165xd3.1	NBR	*
27	121-247-12	Packing (Oil Plug)	1	d12.3xd18x2t	PE	*
34	122-246-14	O-Ring (Brg.Housing/O.Casing)	1	180xd3.1	NBR	*
37	121-408-13	Packing (O.Casing/P.Casing)	1	d153xd183x2t	NBR	*
50	121-152-19	Packing (Discharge Bend)	1	145mm2(P.C.145)	NBR	*
		Lubricant		Turbine Oil VG32 1,200ml		

PARTS LIST		SEWER & WASTEWATER PUMPS			3/10/2017	
ITEM	PART No.	DESCRIPTION	QTY	SIZE	MATERIAL	NOTES

EXPLODED VIEW

80U22.2-52/62



C-00547-2